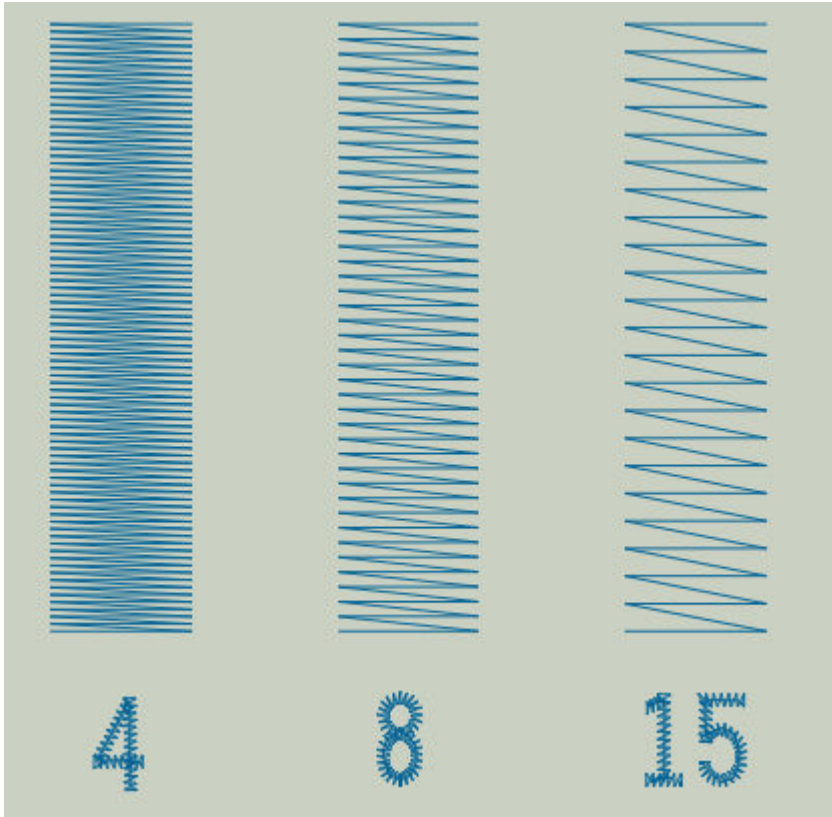
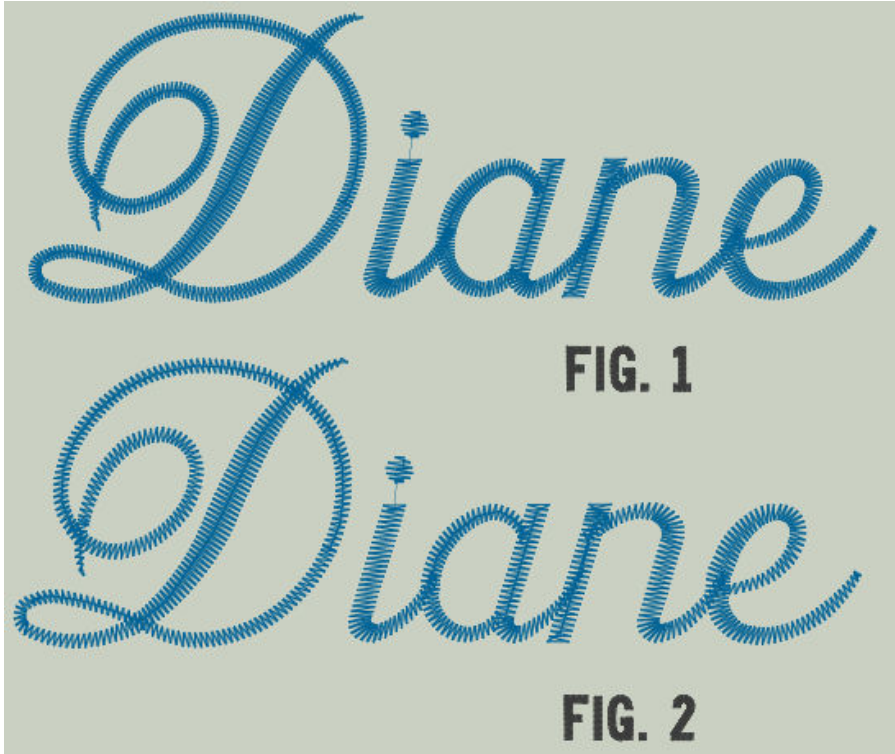



## Density and Auto Density

**Density:** Measures the distance between the stitches. The distance that separates the zig and zag of the stitches is used as the display for density. The larger the value for density, the looser the stitching. The smaller the value for density, the tighter the stitching will become. See diagram below to illustrate a 4, 8 and 15 density setting.



**Auto-Density:** Many columns are not going to be straight from beginning to end. The width may increase, decrease, and increase again. In this situation it is very useful to use the **Auto-Density**. To implement the **Auto-Density** function, left-click in the box (located in Object Properties under “Top Stitching”). Click again to remove the check mark (this turns **Auto-Density** off). Below is an example (FIG. 1) of **Density** (Normal Setting) and (FIG. 2) of **Auto-Density** turned on.



Clicking the  button next to **Auto Density** brings up the following dialog. This enables you to define your own auto density settings based on the column width.

