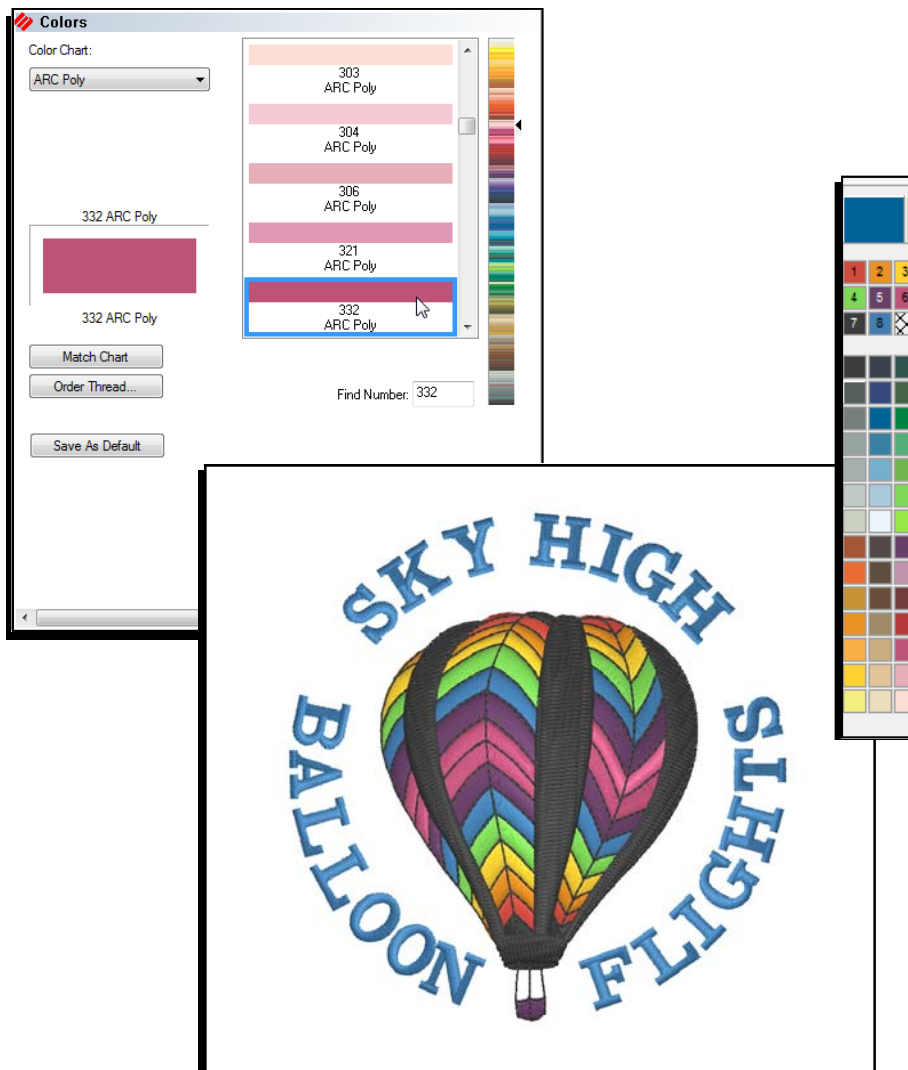
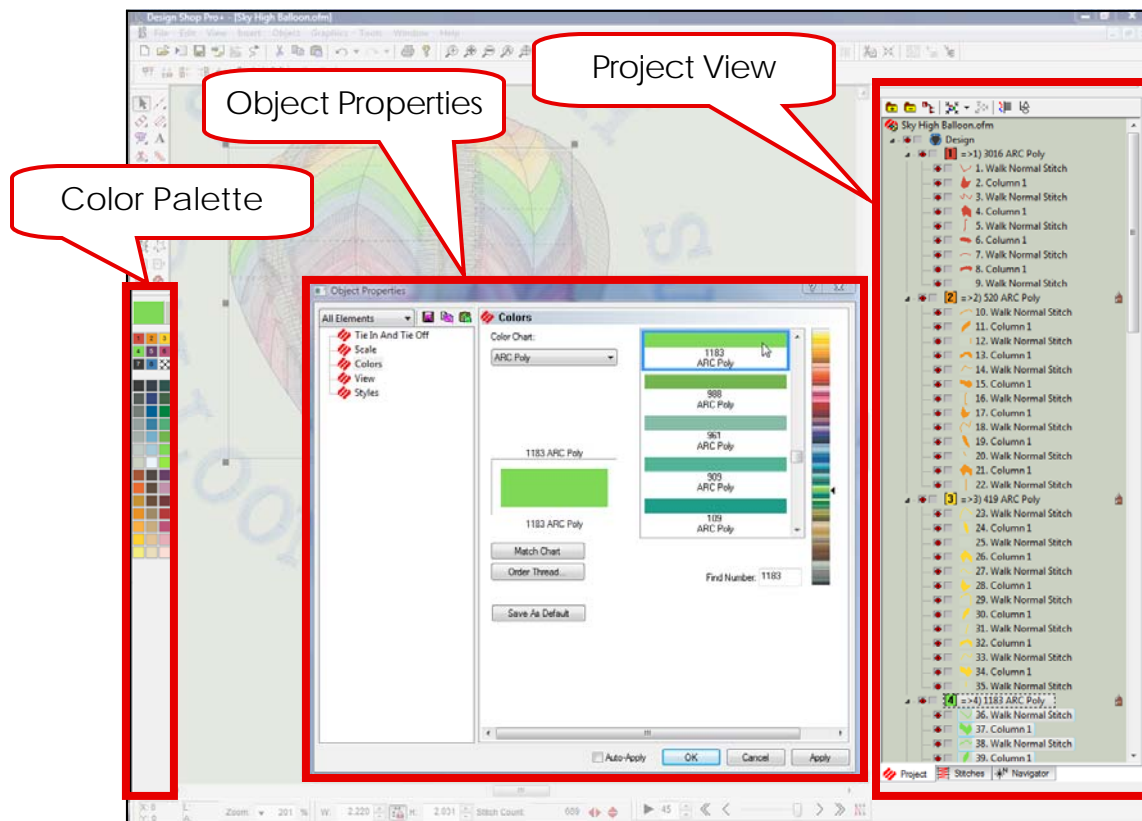


The Color System

DesignShop V9 Quick Reference Guide



Accessing the Color System



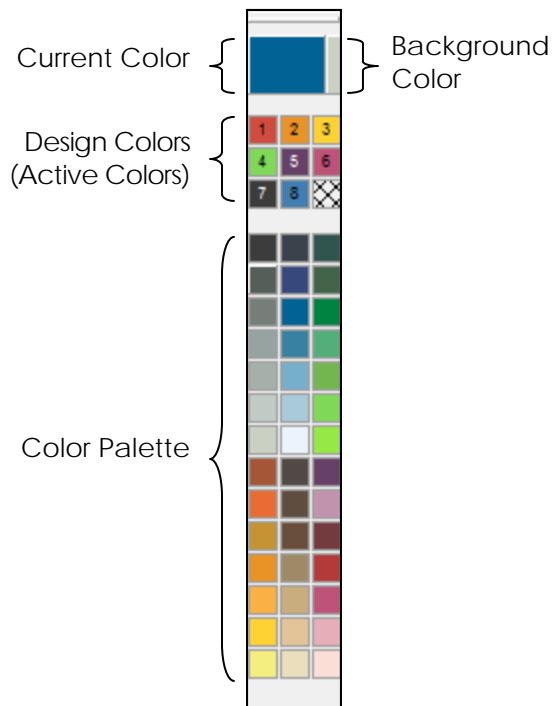
The Color System in DesignShop is comprised of three parts. Many times, only one or two of these sections need to be accessed to affect the desired change.

The Color Palette is on the left side of the screen when you load DesignShop. It is a toolbar and can be moved wherever the user finds most useful. Should the toolbar get closed, it can be retrieved by clicking on View > Toolbars, and checking "Mini-Palette Toolbar".

The Object Properties box is accessed by selecting an element or elements and right-clicking within the selection box. Then, choose "Properties" from the options listed. Another way to get to the Object Properties box is by clicking on View menu and selecting "Properties".

The Project View is third part of the color system. When DesignShop is first loaded, it is located on the far right of the screen. If you cannot find it, click on "View" then "Project Views", then choose "Project View 1".

The Color Palette



Current Color

- The current color displays the color of the currently selected element. If an input is selected, it displays the color that will be used by the tool.
- To change the current color, click on a color in the design colors or the color palette. You could also click on the current color to open the Color Properties window.

Background Color

- The background color allows you to change the background color of your view window. This can help mimic the color of garment on which the design is to be sewn.
- To change the background color, click on the background color button (the sliver of color to the right of the current color block). This will open the Color Properties window. You can then choose a new color for the background.

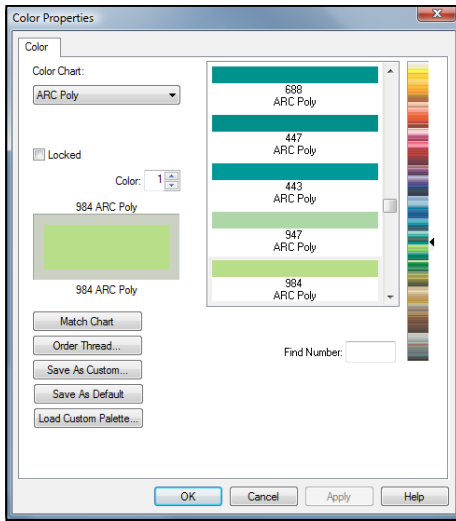
Design Colors (Active Colors)

- Design Colors displays the colors being used in the design.
- Changing Colors
 - Changing the color of a block in Design Colors will change every instance of that thread color in the design. If the design used the same color three times, and that thread color was changed in the Design Colors, all the occurrences of that color would be changed to the new color.
 - Right-click > edit color to change color of that block
 - Click and drag a block from the Palette to Design Colors
- Right-click > Show/Hide (others/all)
- Locked colors allow colors to remain in the active colors even when they are not currently in use. To lock a color, right-click on the block and choose "Locked" from the menu.

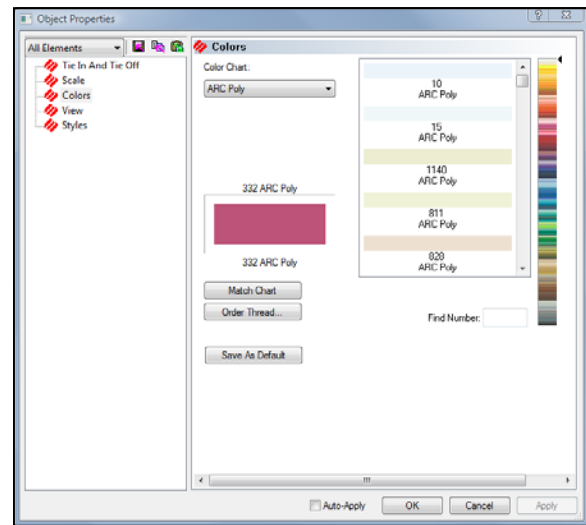
Color Palette

- A small selection of available colors.
- Left-clicking on a block will change the currently selected elements to that color. If no elements are selected, it will change the current color to that color.
- Right-click on the block and choose "Edit Color" to change the color of that block.

Color Properties



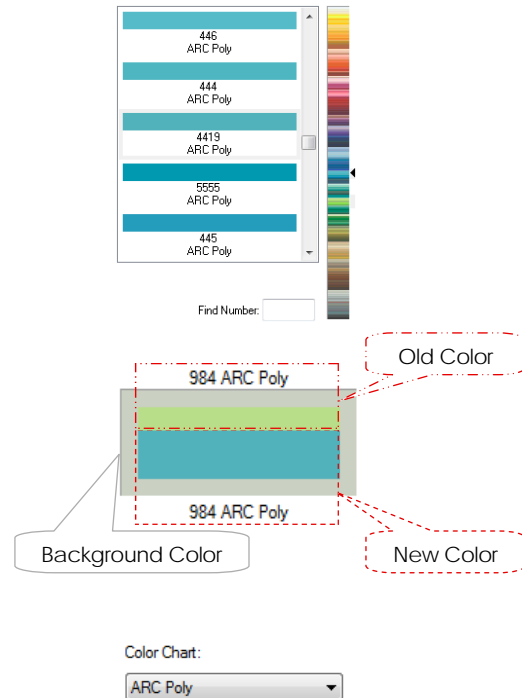
If accessed from the color palette on the left side of the screen, the color properties window can be used to change the thread color of the current color, an active color block, or a palette color block.



If accessed from the project view on the right side of the screen, the color properties window can be used to change the thread color of the currently selected elements.

A new color can be selected by scrolling through either of the scrollable color charts and clicking on the desired color swatch. If the thread number is known, it can simply be entered in the "Find Number" field.

In the preview on the left, the original color is shown on top with the newly chosen color underneath. Both colors are ringed in the background color. When you click "Apply", the original color will change to the new.



If the desired color is not an ARC Poly color, other thread charts are available from the "Color Chart" drop-down menu.

Color in the Project View

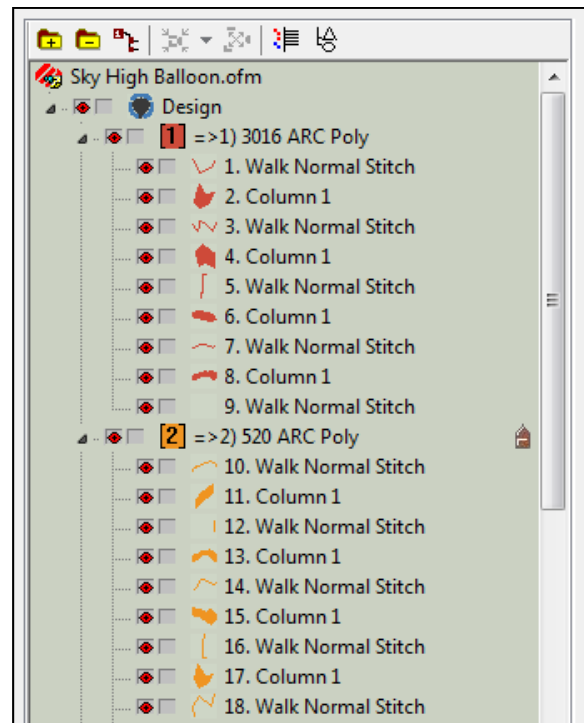
In the Project View, you will notice that there is a color level. These color blocks represent the color sequence. If you click on the color block, you will select every element within that instance of color. If that thread color is repeated later in the sequence, you will not be selecting those elements.

Color Level in the Project View

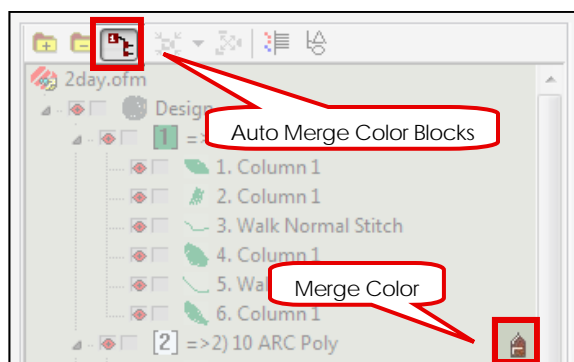
- Right-click on the color group > Color... to change thread color.
OR
- Select the color group, click on the desired color from either the active colors or the color palette.

Element Level

- Color information is stored at the element level.
- Changing the color of an element
 - Select the element(s) > click on the desired color block in the color palette
 - OR
 - Select the element(s) > Right-click > Color... , then choose the desired color in the color properties window.
 - The selected elements change color while all other elements remain



Merging Colors in the Project View



In the Project View, if two identical color blocks exist back to back, you can have the software automatically merge those color blocks. This will create a more efficient design with less color changes when sent to a machine.

If you want to manually merge color blocks, you can click on the small brown arrow to the right of a color block to force it to adopt the color above it in the project view.